

Cynomolgus CDCP1 Protein; His Tag

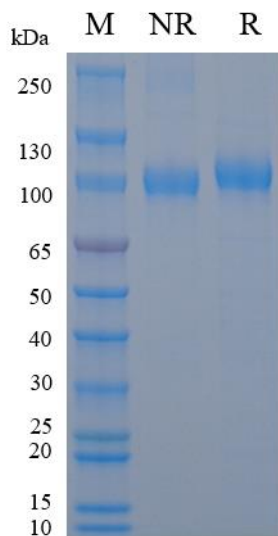
Product Information

Product Name	Cynomolgus CDCP1 Protein; His Tag
Storage temp	Store at $\leq -70^{\circ}\text{C}$, stable for 6 months after receipt. Recommend to aliquot the protein into smaller quantities for optimal storage. Please minimize freeze-thaw cycles.
Catalog# / Size	GM-88173RP-100 / 100 μg GM-88173RP-1000 / 1 mg

Protein Information

Alternative Names	CDCP1, CD318, SIMA135, TRASK, UNQ2486, PRO5773
Source	Cynomolgus CDCP1 Protein; His Tag (GM-88173RP) is expressed from human 293 cells (HEK-293). It contains AA Phe 30 - Thr 667 (Accession # XP_005546930.3). This protein carries a His tag at the C-terminus.
Purity	> 95% as determined by SDS-PAGE
Endotoxin	< 1 EU/ μg , determined by LAL gel clotting assay
Predicted Mol Mass	73.2 KDa
Formulation	Supplied as a 0.2 μm filtered solution of PBS, pH7.2-7.4.
Description	CDCP1 (CD318) is a transmembrane glycoprotein broadly expressed on epithelial cells in skin, adrenal glands, and intestines, plus some blood cells and tumors. It features a long extracellular domain, a single transmembrane segment, and a short cytoplasmic tail. CDCP1 participates in adhesion, migration, signaling, and remodeling, activating pathways like PI3K/Akt and Src to influence survival and movement. Clinically, CDCP1 links to cancer progression, especially invasion and metastasis. Its level and activation may serve as a prognostic marker or therapeutic target, possibly by modulating cell-cell and cell-matrix interactions and the tumor microenvironment. Research continues on its upstream regulators, downstream signaling, and therapies such as antibodies, inhibitors, or antibody-drug conjugates to block its functions.

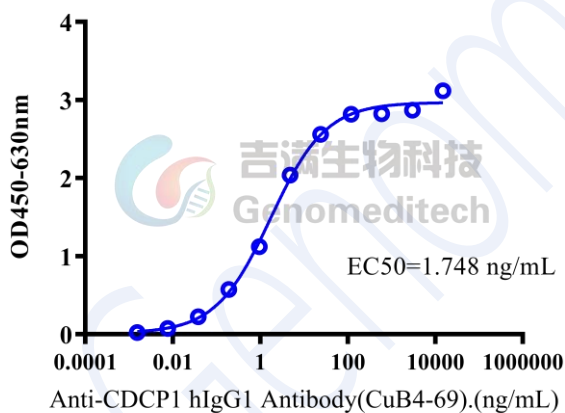
SDS-PAGE



On SDS-PAGE under non-reducing (NR) condition and reducing (R) condition. The gel was stained overnight with Coomassie Blue. The purity of the protein is greater than 95%.

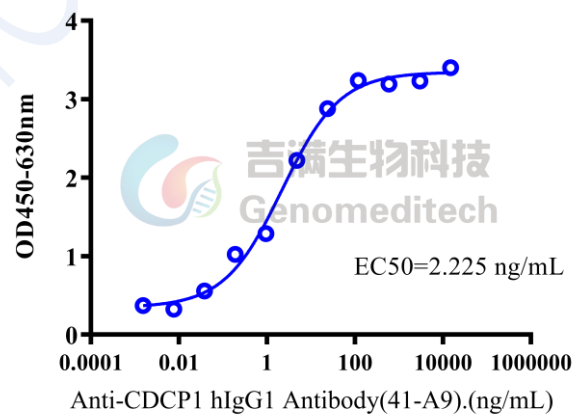
Bioactivity-ELISA

Bioactivity-ELISA
0.2 µg Cynomolgus CDCP1 Protein; His Tag of per well



Cynomolgus CDCP1 Protein; His Tag (Catalog # GM-88173RP) was immobilized at 2 µg/ml (100 µL/well). Increasing concentrations of Anti-CDCP1 hIgG1 Antibody (CuB4-69) (Catalog # GM-88098AB) were added.

Bioactivity-ELISA
0.6 µg Anti-His mIgG2a Antibody+0.2 µg Cynomolgus CDCP1 Protein; His Tag of per well



Cynomolgus CDCP1 Protein; His Tag (Catalog # GM-88173RP) was immobilized at 2 µg/ml (100 µL/well) on Anti-His mIgG2a Antibody (Catalog # GM-59493AB) (0.6 µg/well) precoated. Increasing concentrations of Anti-CDCP1 hIgG1 Antibody (41-A9) (Catalog # GM-88114AB) were added.